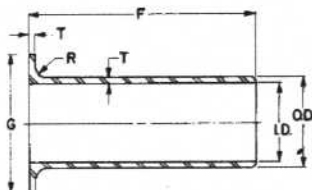


lap joint stub end

dimensions: All dimensions in inches and are in accordance with ASA B16.9 and MSS-SP-48 where established.



pressure-temperature rating: Identical with those of seamless pipe of same size, thickness, and material grade.

footnotes: *Pipe schedule numbers in accordance with ASA B36.10.

▲This size and thickness does not correspond with any schedule number.

nominal pipe size	length F	outside diameter O. D.	inside diameter I. D.	wall and lap thickness T	diameter G	radius R	pipe schedule number*	weight (approx) lb
standard								
1/2	3	.840	.622	.109	1 3/8	1/8	40	.3
3/4	3	1.050	.824	.113	1 11/16	1/8	40	.4
1	4	1.315	1.049	.133	2	1/8	40	.7
1 1/4	4	1.660	1.380	.140	2 1/2	3/16	40	1.0
1 1/2	4	1.900	1.610	.145	2 7/8	1/4	40	1.1
2	6	2.375	2.067	.154	3 5/8	5/16	40	2.2
2 1/2	6	2.875	2.469	.203	4 1/8	5/16	40	3.5
3	6	3.500	3.068	.216	5	3/8	40	4.7
3 1/2	6	4.000	3.548	.226	5 1/2	3/8	40	5.6
4	6	4.500	4.026	.237	6 3/16	7/16	40	6.8
5	8	5.563	5.047	.258	7 7/16	7/16	40	11.8
6	8	6.625	6.065	.280	8 1/2	1/2	40	15.3
8	8	8.625	7.981	.322	10 5/16	1/2	40	23.1
10	10	10.750	10.020	.365	12 3/4	1/2	40	39.9
12	10	12.750	12.000	.375	15	1/2	▲	49.2
14	12	14.000	13.250	.375	16 1/4	1/2	30	63
16	12	16.000	15.250	.375	18 1/2	1/2	30	73
18	12	18.000	17.250	.375	21	1/2	▲	85
20	12	20.000	19.250	.375	23	1/2	20	94
24	12	24.000	23.250	.375	27 1/4	1/2	20	116

extra strong

1/2	3	.840	.546	.147	1 3/8	1/8	80	.4
3/4	3	1.050	.742	.154	1 11/16	1/8	80	.5
1	4	1.315	.957	.179	2	1/8	80	.9
1 1/4	4	1.660	1.278	.191	2 1/2	3/16	80	1.2
1 1/2	4	1.900	1.500	.200	2 7/8	1/4	80	1.5
2	6	2.375	1.939	.218	3 5/8	5/16	80	3.1
2 1/2	6	2.875	2.323	.276	4 1/8	5/16	80	4.6
3	6	3.500	2.900	.300	5	3/8	80	6.3
3 1/2	6	4.000	3.364	.318	5 1/2	3/8	80	7.7
4	6	4.500	3.826	.337	6 3/16	7/16	80	9.3
5	8	5.563	4.813	.375	7 7/16	7/16	80	16.7
6	8	6.625	5.761	.432	8 1/2	1/2	80	23.0
8	8	8.625	7.625	.500	10 5/16	1/2	80	34.9
10	10	10.750	9.750	.500	12 3/4	1/2	60	53
12	10	12.750	11.750	.500	15	1/2	▲	64
14	12	14.000	13.000	.500	16 1/4	1/2	▲	84
16	12	16.000	15.000	.500	18 1/2	1/2	40	97
18	12	18.000	17.000	.500	21	1/2	▲	112
20	12	20.000	19.000	.500	23	1/2	30	126
24	12	24.000	23.000	.500	27 1/4	1/2	▲	152