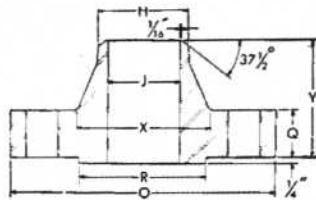
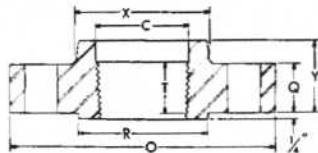


1500 lb flange

welding neck



threaded



manufacture: ★150 lb flanges are carbon steel furnished to ASTM specifications A105 grade 1. ASTM A105 is the same as Boiler Construction Code Specification SA105. Flanges furnished faced, drilled, and soot faced or back faced

dimensions: All dimensions are in inches and in accordance with ASA B16.5 where applicable. 22 inch is an interpolated dimension as given in MSS-SP-44. Sizes 26" to 42" have same flange drilling dimensions as 125 lb class cast iron flanges, ASA B16.1.

◆Flanges bored to dimensions shown, unless otherwise specified. Dimensions shown correspond to ASA B36.10 inside diameter of standard wall pipe.

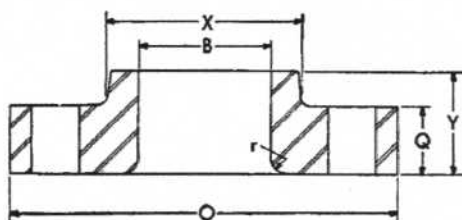
†Thread lengths for 150 lb flanges are American Standard for Pipe Threads ASA B2.1. Add depths or height of facing to thread length.

‡Length shown does not include thickness of lap. For lapped to lapped, add thickness of both laps; for lapped to $\frac{1}{8}$ inch raised face add one thickness of lap; for lapped to any other facing, add amount that such facing and one lap will cause the flanges to be separated.

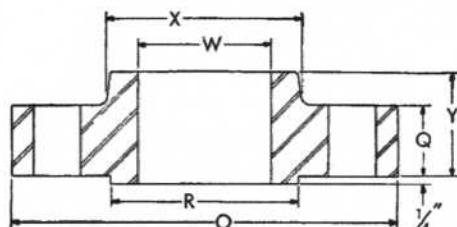
nominal pipe size	outside diam. of flange O	thick-ness of flange Q (min.)	diam. of raised face R	diam. of hub at base X	no. of bolt holes	diam. of bolts [†]	diam. of bolt circle	length of stud bolts [‡]			length thru hub		
								$\frac{1}{8}$ " raised face	ring joint	male & female, tongue & groove	welding neck Y	slip-on, th'rd Y	lap joint Y
1/2	4 3/4	7/8	1 3/8	1 1/2	4	3/4	3 3/4	4	4	3 3/4	2 3/8	1 1/4	1 1/4
3/4	5 1/8	1	1 11/16	1 3/4	4	3/4	3 1/2	4 1/4	4 1/4	4	2 3/4	1 3/8	1 3/8
1	5 7/8	1 1/8	2	2 1/16	4	7/8	4	4 3/4	4 3/4	4 1/2	2 7/8	1 5/8	1 5/8
1 1/4	6 1/4	1 1/8	2 1/2	2 1/2	4	7/8	4 3/8	4 3/4	4 3/4	4 1/2	2 7/8	1 5/8	1 5/8
1 1/2	7	1 1/4	2 7/8	2 3/4	4	1	4 7/8	5 1/4	5 1/4	5	3 1/4	1 3/4	1 3/4
2	8 1/2	1 1/2	3 3/8	4 1/8	8	7/8	6 1/2	5 1/2	5 3/4	5 1/4	4	2 1/4	2 1/4
2 1/2	9 5/8	1 5/8	4 1/8	4 7/8	8	1	7 1/2	6	6 1/4	5 3/4	4 1/8	2 1/2	2 1/2
3	10 1/2	1 3/8	5	5 1/4	8	1 1/8	8	6 3/4	7	6 1/2	4 5/8	2 7/8	2 7/8
4	12 1/4	2 1/8	6 3/16	6 3/8	8	1 1/4	9 1/2	7 1/2	7 3/4	7 1/4	4 7/8	3 3/16	3 3/16
5	14 3/4	2 7/8	7 5/16	7 3/4	8	1 1/2	11 1/2	9 1/2	9 3/4	9 1/4	6 1/8	4 1/8	4 1/8
6	15 1/2	3 1/4	8 1/2	9	12	1 3/8	12 1/2	10	10 1/4	9 3/4	6 3/4	4 11/16	4 11/16
8	19	3 5/8	10 5/16	11 1/2	12	1 5/8	15 1/2	11 1/4	11 3/4	11	8 3/8	5 5/8	5 5/8
10	23	4 1/4	12 3/4	14 1/2	12	1 7/8	19	13 1/4	13 1/2	13	10	6 1/4	7
12	26 1/2	4 7/8	15	17 3/4	16	2	22 1/2	14 3/4	15 1/4	14 1/2	11 1/8	7 1/8	8 5/8
14	29 1/2	5 1/4	16 1/4	19 1/2	16	2 1/4	25	16	16 3/4	15 3/4	11 3/4	-----	9 1/2
16	32 1/2	5 3/4	18 1/2	21 3/4	16	2 1/2	27 3/4	17 1/2	18 1/2	17 1/4	12 1/4	-----	10 1/4
18	36	6 3/8	21	23 1/2	16	2 3/4	30 1/2	19 1/4	20 1/4	19	12 7/8	-----	10 7/8
20	38 3/4	7	23	25 1/4	16	3	32 3/4	21	22 1/4	20 3/4	14	-----	11 1/2
24	46	8	27 1/4	30	16	3 1/2	39	24	25 1/2	23 3/4	16	-----	13

1500 lb flange

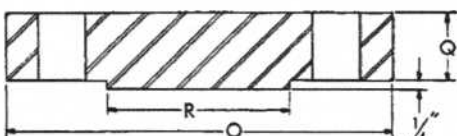
lap joint



slip-on



blind



nominal pipe size	diameter of bore				minimum thread length T→	diam. of hub at point of welding H	radius r	weight (approx.) lb			
	threaded counter bore C	lap joint B	slip-on W	welding neck Jφ				welding neck	slip-on and threaded	lap joint	blind
1/2	.93	.90	.88		3/8	.84	1/8	7	9	9	4
3/4	1.14	1.11	1.09	as	1	1.05	1/8	7	9	9	6
1	1.41	1.38	1.36		1 1/8	1.32	1/8	9	9	9	9
1 1/4	1.75	1.72	1.70		1 3/8	1.66	3/16	10	10	10	10
1 1/2	1.99	1.97	1.95	spect-	1 1/4	1.90	1/4	14	14	14	14
2	2.50	2.46	2.44		1 1/2	2.38	3/16	25	25	25	25
2 1/2	3.00	2.97	2.94		1 3/8	2.88	5/16	36	36	35	35
3	3.63	3.60	3.57	field	2	3.50	3/8	48	48	47	48
4	4.63	4.60	4.57		2 1/4	4.50	7/16	73	73	75	73
5	5.69	5.69	5.66		2 1/2	5.56	3/8	132	132	138	142
6	6.75	6.75	6.72	by	2 3/4	6.63	1/2	164	164	170	159
8	8.75	8.75	8.72		3	8.63	1/2	273	258	286	302
10	10.88	10.92	10.88		3 5/8	10.75	1/2	454	436	485	507
12	12.94	12.92	12.88	pur-	3 5/8	12.75	1/2	690	667	749	775
14	14.18	14.14		14.00	1/2	940	weights	890	975
16	16.19	16.16		16.00	1/2	1250	on	1150	1300
18	18.20	18.18	chaser	18.00	1/2	1625	appli-	1475	1750
20	20.25	20.20		20.00	1/2	2050		1775	2225
24	24.25	24.25		24.00	1/2	3325	cation	2825	3625